

6 months

1-3 years

5-10 years

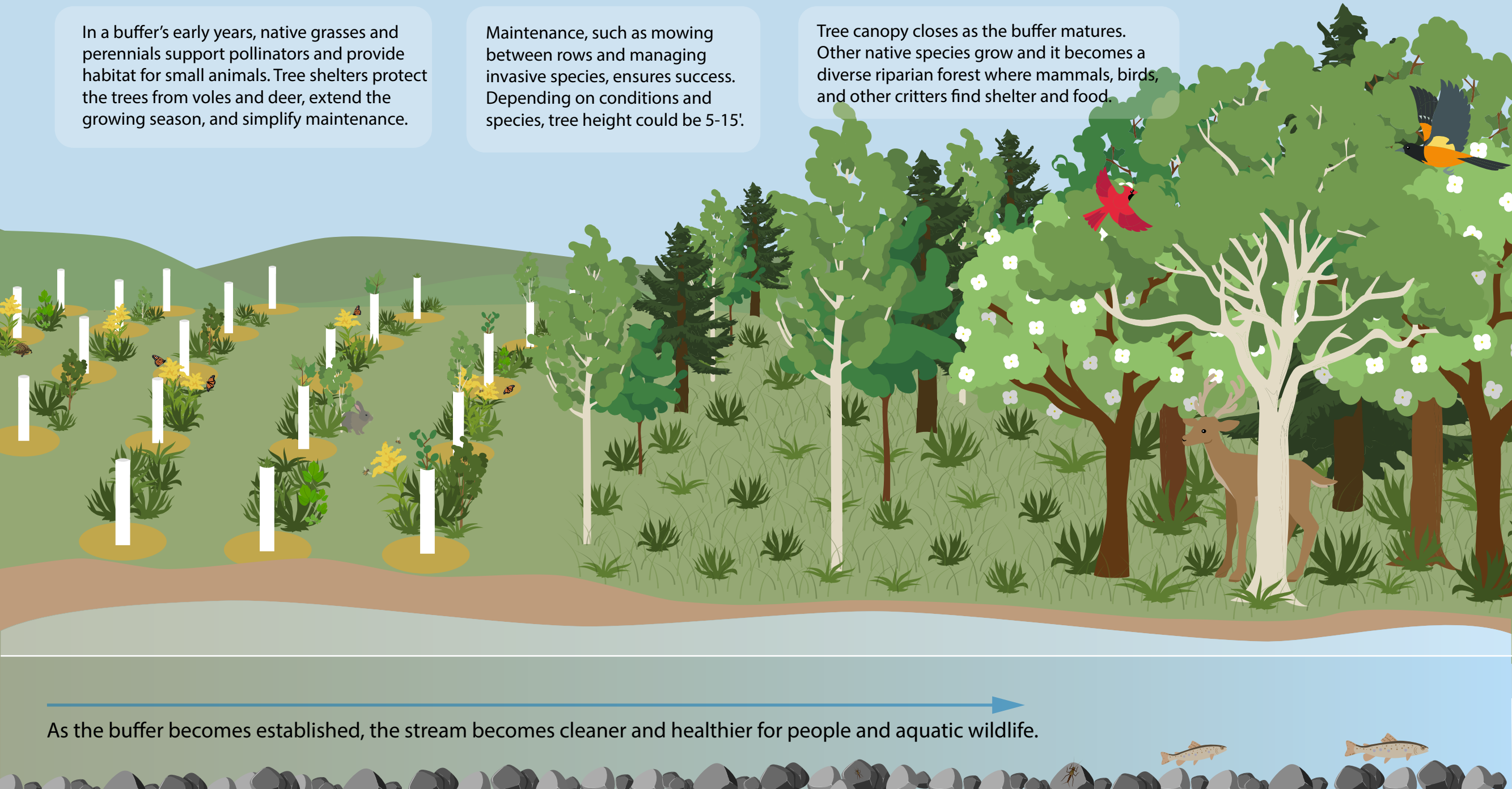
10+ years

Riparian
Consortium

In a buffer's early years, native grasses and perennials support pollinators and provide habitat for small animals. Tree shelters protect the trees from voles and deer, extend the growing season, and simplify maintenance.

Maintenance, such as mowing between rows and managing invasive species, ensures success. Depending on conditions and species, tree height could be 5-15'.

Tree canopy closes as the buffer matures. Other native species grow and it becomes a diverse riparian forest where mammals, birds, and other critters find shelter and food.



As the buffer becomes established, the stream becomes cleaner and healthier for people and aquatic wildlife.